



Who are we?

CoramBAAF is the UK's leading membership organisation for professionals working across adoption, fostering and kinship care.

- We are a publisher
- We are a training provider
- We are at the frontline of policy and practice reform
- We are a community
- We are an advice and information service

Who are we?

AFKA Cymru promotes good practice across the breadth of permanency planning for children and young people. We are all about learning and development and offer advice, training and consultancy to professionals and members of the public to support best practice.

- We are a training provider
- We disseminate research and best practice
- We facilitate special interest groups
- We are an advice, information and consultancy service

Housekeeping

Please make sure you:

- Silence your phone
- Mute your microphone
- No names in chat but make sure name matches registered name
- Session is being recorded – available on website within 14 days
- Questions in chat at end – update FAQs



Accessing Form K (Wales)

- Wales Core Licence or Wales Fostering Licence – email sent to your forms contact person with password protected link to our website
- Licence automatically transfers from Form C to Form K
- Not sure if you have a licence – email membership@coram.org.uk
- Don't have a licence – email licences@coram.org.uk
- Practice issues re Form K – email advice@corambaaf.org.uk or complete [Request for Advice or Information - AFKA Cymru](#)



Form K (England) published February 2025

Project over 2 years:

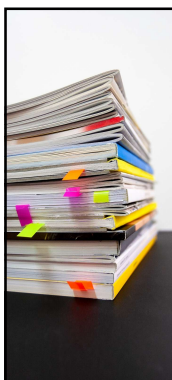
Process of the review to develop Form K (England)

- Listened and learned from kinship carers
- Listened and learned from practitioners
- Consulted with kinship researchers
- Consulted with parents
- Consultation with other stakeholders
- Piloted draft form in 10 LA's

Process of the review to develop Form K (Wales)

Form K (Wales) published April 2026

- Liaised closely with AFKA Cymru to understand Welsh kinship context
- Piloted Form K (Wales) in 8 LA's
- Piloted Welsh Fostering Support plan
- Agreed combination of All Wales SGO Support Services Plan and Form K (Wales) – Support Plan



Key messages from research

- Consider what matters to children – listen, understand, do
- Significant unmet support needs for kinship families
- Support makes a difference to carers' well-being
- Support likely to reduce risk of disruption
- Assessment experience and process is not the same as for foster carers and adopters
- Can identify child and carer risk factors that associated with higher/lower risk of poor outcome but cannot reliably predict outcomes
- Policies and processes don't consider needs of sibling carers enough
- Family support services generally – not culturally sensitive and not representative of communities

Underpinning principles

- Strengths-based and trauma-informed
- Enable a relationship-based and reflective assessment process
- Enable prospective kinship carers to have the time and support to make life-changing decisions to care for a child
- Amplify the voice of the child
- Articulates what it means for the child to live with an adult they are likely to already know and trust
- Enable reasonable and proportionate assessment
- Enable robust analysis to inform comprehensive support planning
- Enable anti-racist and culturally sensitive practice
- Not limited by any rigid definitions of what it means to be a family
- Inclusive and relevant for overseas carers
- Minimum 12-week timescale

**Form K
(Wales)
Includes**

- Kinship Care Assessment (Form K) Wales
 - Part 1 – Introductory Information and Recommendation
 - Part 2 – Assessment Information and Analysis
 - Part 3 – Checks and References
- Kinship Care Assessment (Form K) Wales - Support Plan
- Guidance Notes
- Appendix 1 – Legal compliance
- Appendix 2 – Overseas questions and guidance
- Prospective kinship carer information sheet
- Example versions of Form K and Support Plan (Wales) for carers (PDF)
- Parent information sheet

Part 1:
Introductory
information and
recommendation

[illegible]

Part 1:
Introductory
information and
recommendation
– Welsh language

[illegible]

Part 2:
Assessment
information and
analysis

CoramBAAF Home & Family Care Assessment Model (2024)

Home & Family Care Assessment Model (2024)

Relationships within the family and the home

- What are the people living in the home, including children and young people, think and feel?
- How have relationships changed since there have been concerns about the child's care or about the child's placement?

Important people in the child's life

- How often does the child spend time with people who are important to them, including parents, siblings and others?
- What are the children's wishes and feelings about these current plans?
- What are the parents' wishes and feelings about these current plans?
- What are the child's wishes and feelings about these current plans? Are there any challenges in making these plans work?

©2024 CoramBAAF children - fostering - family 26

CoramBAAF Home & Family Care Assessment Model (2024)

Home & Family Care Assessment Model (2024)

Future plans

- What are the child's wishes and feelings about seeing these important people in the future?
- What are the proposed plans, if known, for a child spending time with these important people?
- What are the parents' wishes and feelings about future plans?
- What are the child's wishes and feelings about future plans?

Analysis - how might this influence their care in the future?

- Capacity to manage current and proposed future contact plans
- Capacity to manage changing relationships with the child's parents
- Capacity to manage changing relationships between other family members and those within the home

Other support might be needed?

©2024 CoramBAAF children - fostering - family 27

Part 2:
Assessment
information and
analysis

CoramBAAF Home & Family Care Assessment Model (2024)

Home & Family Care Assessment Model (2024)

Analysis - how might this influence their care in the future?

- Reality of potential support
- Capacity to act for support
- Capacity to reflect and learn from others to enhance their care of the child

What support might be needed?

2) Summary of analysis - strengths, vulnerabilities and meaning for the child

- Analysis might given to the child's wishes and feelings, and proposed future plans
- Analysis might given to the parent's wishes and feelings, and proposed future plans
- Analysis might given to the child's wishes and feelings, and proposed future plans
- Analysis might given to the parent's wishes and feelings, and proposed future plans

3) Recommendation

- Describe the purpose of the assessment, its significance in making the recommendation and about of key individuals
- Recommend a family care plan
- Recommend a family care plan
- Recommend a family care plan

3) Prospective family care/ comments on the assessment

3) Team manager comments

©2024 CoramBAAF children - fostering - family 28

Part 3:
Checks and
references

CoramBAAF Home & Family Care Assessment Model (2024)

Home & Family Care Assessment Model (2024)

Part 3: Checks and references

Please insert additional notes as required, e.g. DfE checks for each adult member of the household.

Statutory and background checks

Who is the check about?	When is the check due?	Summary of the check
DBS		
Local authority records		
Medical report		
Home visit		
Employment		
Home visit		
Health and safety		
Other checks (e.g. health, safety, insurance)		

References

- References are required for all family assessments (see guidance)
- In addition, references should be given to relevant professionals and adult children (see guidance)

References to be used

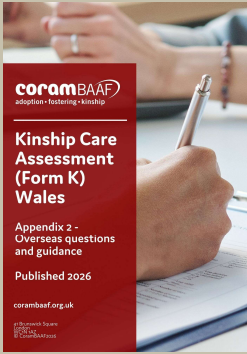
Reference to be used	Reference to be used	Reference to be used

©2024 CoramBAAF children - fostering - family 29

© CoramBAAF 2024

[illegible]

Overseas
questions
and
guidance



Any queries:
outbound@corambaaf.org.uk

CFAB Advice Line:
020 7735 8941
info@cfab.org.uk

Welsh Central Authority:
welshca@cfab.org.uk

Parent and
carer
information
sheets

Kinship Care Assessment (Form K) Wales: Prospective kinship carer information sheet

A social worker will be completing an assessment of you as a potential kinship carer, using Form K Wales. It is important that you have this information about what to expect during the assessment as some kinship carers tell us the process can feel frustrating and confusing. Your social worker will explain why they need to ask questions about you and your family circumstances and will be able to answer any questions you may have. You should also receive a letter telling you of any support from your social worker.

What is a Kinship Care Assessment (Form K)?

The kinship care assessment form is a supporting document used for you as a family, your strengths, as well as any support that you might need. It should help the social worker talk to you about what is important to you as a family, and it might include information about your ethnicity, religion and culture. It should also enable you to have the time and support to make the changing decisions to care for a child, to understand the child's values and beliefs, to make kinship care arrangements and to make the child's needs should also be included as they may have an ongoing relationship with their child.

How is a Kinship Care Assessment (Form K) used?

The assessment is designed to enable a social worker to work with you, to make sure the relevant information is written in the assessment so that decisions can be made for the child. This report might be shared in court or with a safeguarding panel. Form K Wales includes a support plan to ensure that all those involved in your assessment make provision for what support your kinship family will need now and possibly in the future.

Timescales

It is recommended that the kinship care assessment should take place over 15 weeks. Sometimes the court may require that it is completed in less time than this. But it is important that you and the social worker have enough time to discuss all relevant information that will inform a decision about whether the child should live with you.

Approval or legal order

Form K Wales can be used to recommend that you are approved either as a kinship foster carer or that a special guardianship order or child arrangements order is made.

Kinship Care Assessment (Form K) Wales: Parent information sheet

A social worker will be completing an assessment of a potential kinship carer for your child. We want to give you some information about the assessment process and the form that will be used (Form K Wales). Parents often say that they don't feel included in the process and don't have much information. Therefore this information sheet is a starting point and you should speak to your child's social worker if you have more questions.

What is a Kinship Care Assessment (Form K)?

The kinship care assessment form is a supporting document used for a kinship family, their strengths, as well as any support they might need. It should help the social worker talk to the kinship carer about what is important to them as a family, which might include information about ethnicity, religion and culture. It should also give them the time and support to make the changing decisions to care for a child, to understand the child's values and beliefs, to make kinship care arrangements and to make the child's needs should also be included as they may have an ongoing relationship with their child.

How is a Kinship Care Assessment (Form K) used?

It is designed to help a social worker to work with the kinship carer, to make sure the relevant information is written in the assessment so that decisions can be made for the child. This report might be shared in court or with a safeguarding panel.

There are sections within Form K (Wales) that ask for your views as a parent. It is important that your views are included. You should be asked for your views on the kinship arrangement itself, on plans for how you will see or stay in touch with your child, and your views about important parts of your child's identity, for example, their ethnicity, religion or culture.

If the plan is for your child to live with the prospective kinship carer, Form K Wales includes a support plan to ensure that the kinship family, including your child, receives the support they need.

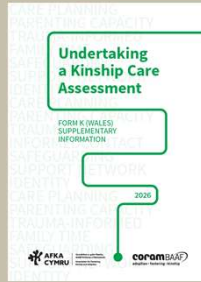
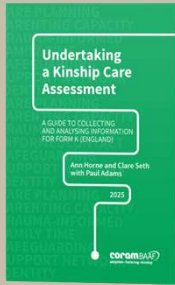
Contact details

Child's social worker name:	
Child's social worker contact details:	
Kinship assessing social worker name:	
Kinship assessing social worker contact details:	

Key points

- Navigation pane
- Form C and Form K
- Support plan is not optional
- No need to complete two plans unnecessarily
- Remember voice of the child – golden thread
- Articulate the importance of pre-existing relationship
- Holistic assessment to inform child-led care planning not carer status to inform assessment type

Relevant CoramBAAF books - [Bookshop](#) | [CoramBAAF](#)



Next steps

Training:

- [Making Good Assessments – Kinship / Connected Persons - AFKA Cymru 19-21st May \(12 hours\)](#)

Conferences:

- [AFKA Cymru Kinship Conference 2026 - AFKA Cymru 11th June](#)
- Save the date – CoramBAAF Kinship Conference 12th October

Practitioner Forums:

- [AFKA Cymru Special Interest Group - Special Guardian/ Connected Persons 7th May 1.30-3.30p.m](#)
- [Kinship Care Practice Forum | CoramBAAF 8th July 10.00-12.30p.m](#)

Events:

- Save the date – Open access event “Improving the kinship local offer and approach to kinship care” with Jahnine Davis, Kinship Ambassador 15th June 12.00-1.30p.m

Upcoming Events

30 April 2026 | 11.30am – 1.00pm | ONLINE

[Learning from Research: Safeguarding in the context of adoption and special guardianship](#)

12 May 2026 | 11.30am – 1.00pm | ONLINE

[Exploring Expertise: The ICO's 'Better Records Together' campaign and New Record Standards](#)

19 May 2026 | 12.00pm – 1.00pm | ONLINE

[Exploring Practice: Using Agentic AI to support social work practice in fostering](#)



Thank you for joining



Evaluation and certificate

To fill in our evaluation form scan the QR code or use the link below, which will be posted in the chat;

<https://emea.dcv.ms/NzBWgKoTyN>

Once you have completed your evaluation form you will receive your certificate.

Presentation materials including reading lists, slides and video links are shared post event

Thank you from CoramBAAF



We hope to see you again soon!



@CoramBAAF



@CoramBAAF



@CoramBAAF



@Adoptionfostering
